

# IBV-A4S Junction Box Adapter Plate

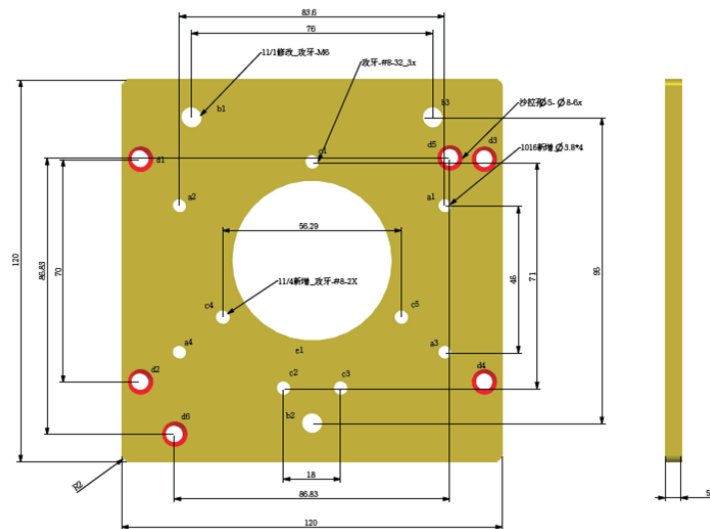
Installation Guide

**C6697M**

## Package Contents

- Adapter plate for junction box
- Screws: 4x flathead countersunk 6# x12; 3x pan head M6 x6; 5x flathead countersunk 8# x1/2"

## IBV-A4S Junction Box Adapter Plate Dimension Drawing



## Installation

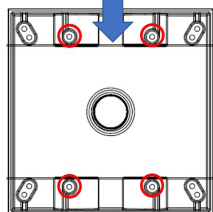
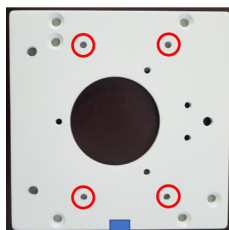
1. Install the adapter plate to one of the different types of 4" junction boxes using the included screws as shown below.



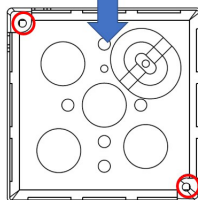
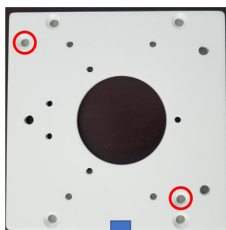
4X Flat head  
#6 x 1/2"



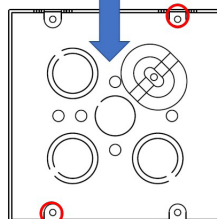
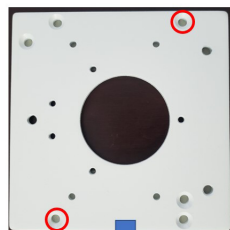
2X Flat head  
#8 x 1/2"



2-Gang Outlet Box



4" Square Box

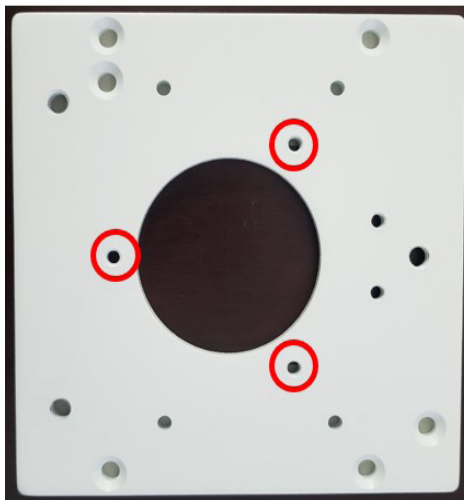


4-11/16" Square Box

2. Secure the camera to the adapter plate using three #8 screws in the location circled below.



3X Flat head  
#8 x 1/2"



3. Refer to the camera's Quick Installation Guide for the rest of the installation instructions.

**Pelco, Inc.**

625 W. Alluvial, Fresno, California 93711 United States

**USA & Canada** Tel (800) 289-9100 Fax (800) 289-9150

**International** Tel +1 (559) 292-1981 Fax +1 (559) 348-1120

**www.pelco.com**